



AWARENESS TRAIL



Can you find the 12 elves hidden around Princesshay raising awareness for local charity Exeter Leukaemia Fund? Each of our elves represents the great work ELF does to support the RD&E Haematology Centre and the services ELF provide for families across Devon whose lives have been turned upside by blood cancer.

Exeter Leukaemia Fund is proud to be working with Princesshay as the centre's charity partner for 2024/25. We are very grateful to Princesshay for allowing us the use of their space to create this free family friendly Elf Trail.

If you would like to make a voluntary donation, you can do so by scanning the QR code below. Any donations received will help more families like Sophias this Christmas.

For little Sophia, the best Christmas bells this year aren't the ones on Santa's sleigh. The most magical bell for this three-year-old is the one she rang at Royal Devon and Exeter Hospital, marking the end of her cancer treatment.

We're there for families from their first diagnosis, offering support which makes the cancer journey that little bit easier for them and for their loved ones.



Scan here
to donate

elfcharity.org.uk



"They do so much - it's an amazing and beautiful thing, because they help keep you together while you're going through such a difficult experience"

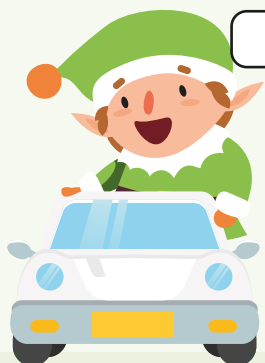
Sophia's mum, Serann



BUILDING - ELF has funded building and development projects at the RD&E Hospital to ensure the best possible facilities are available for local people. This includes the Haematology Centre itself which is a recognised beacon of excellence, providing treatment and medical care for people with blood cancers and disorders in a warm and comforting environment.



COUNSELLING AND WELLBEING - ELF understands that good mental health is an important part of the patient journey. ELF provides a range of wellbeing support including one to one counselling.



TRANSPORT - ELF's fleet of cars and our caring team of drivers are available to help patients and carers travel to and from hospital appointments.



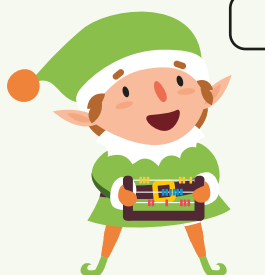
FELLOWSHIPS - ELF Fellowships are available to Exeter's hardworking NHS Haematology team. These secure the best possible outcomes for haematology patients in Devon by helping to ensure our medical staff are highly trained and highly motivated to provide excellent care.



EQUIPMENT - ELF provides the NHS with vital equipment to help patients and the Yarty Ward staff team. Items purchased by ELF include televisions and fridges for patient rooms, fitness equipment to help with patient rehabilitation, blood storage fridges and a £20,000 ultrasound machine to help make life easier for the hard-working team on the ward, plus new plants and pots to brighten the ELF family suite garden.



ACCOMMODATION - ELF can provide hotel accommodation near the hospital for patients receiving treatment at the RD&E Hospital.



FINANCIAL SERVICES - Through our partnership with the Citizen's Advice Bureau, ELF offers patients support and advice on accessing benefits.



SUPPORT GROUPS - ELF coordinates support groups offering a safe space for patients and family members to meet each other, share their experience, diagnosis difficulties and general friendly conversation.



REFRESHMENTS - Drinks and refreshments are available to patients and relatives in the hospital's haematology waiting room. Always served with a smile.



FINANCIAL GRANTS - One off emergency support grants of up to £500 are available to patients experiencing financial hardship.



LEGAL SERVICES - Through our partnership with local solicitors, ELF offers patients a free Will writing and review service alongside signposting to other legal services.



HOSPITAL GIFT BAGS - ELF provides festive gifts and care packages to help patients through difficult times in hospital.